

P23012 Wingates Plot 3

Drawing Register: AEW

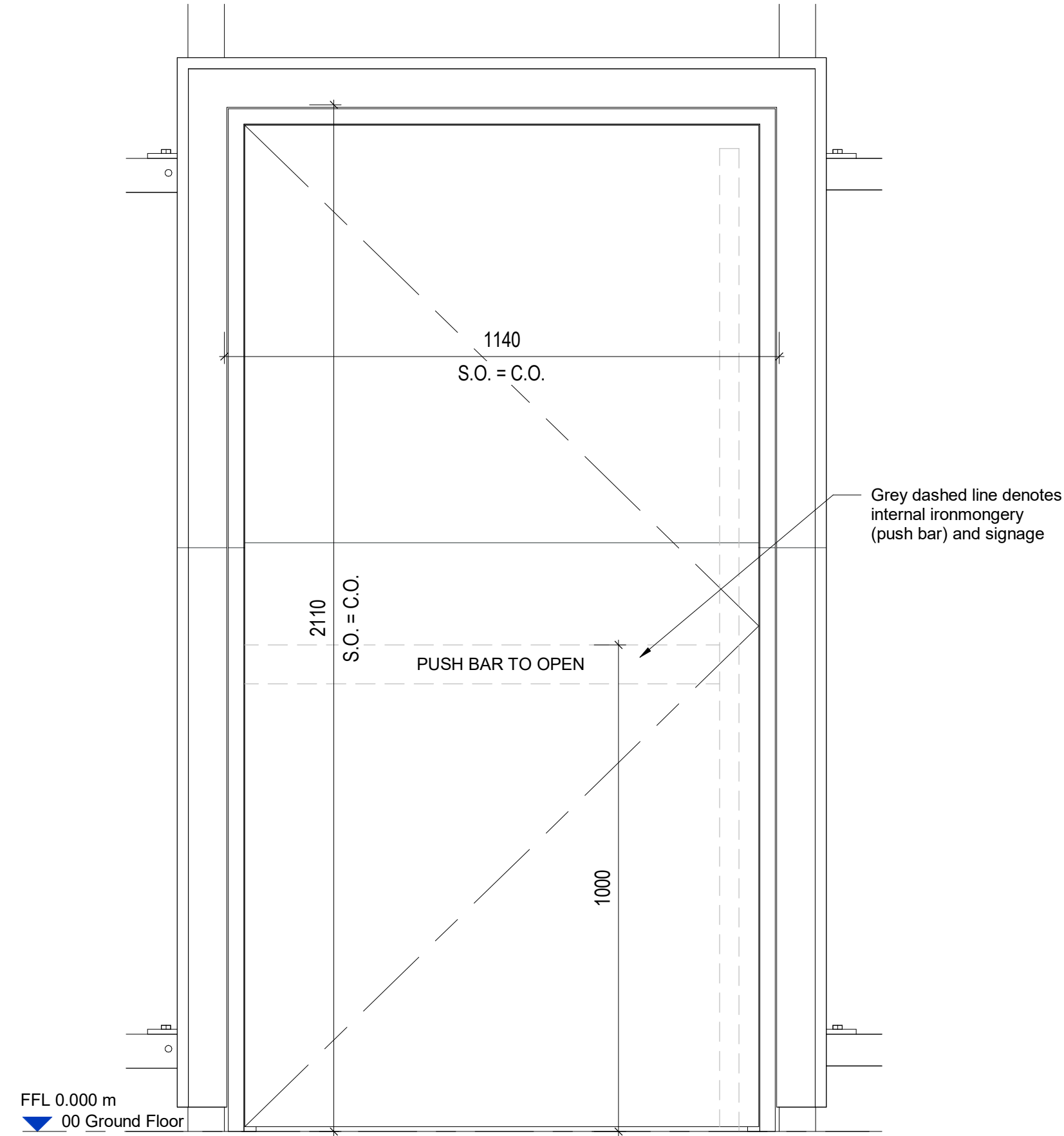
*Please note: All drawings listed below are hyperlinked to the drawings listed.
Please click on the drawing title to go directly to the drawing of your choice.*

Works Completed: Architects Finishing Schedule

Drawing No.	Drawing Title	Rev
P23012-AEW-03-00-SH-A-7001	External-Door-Schedule	C4
P23012-AEW-03-ZZ-DR-A-1007	Proposed-External-Finishes-Plan	C3
P23012-AEW-03-ZZ-DR-A-2009	Floor-Finishes-Plan	C4
P23012-AEW-03-ZZ-SH-A-7000	Internal-Door-Schedule	C8
P23012-AEW-03-ZZ-SH-A-7002	Window-and-Curtain-Walling-Schedule	C7

External Door Schedule											
Number	Manufacturer	Description	Frame	Door C.O. Height	Door C.O. Width	Door S.O. Height	Door S.O. Width	Signage	Handle	Door Closer	Comments
			Finish								
EX-03-00-01	Alutech	External Double Surface Mounted Sliding Door	PPC aluminium, Anthracite RAL 7016								Automatic sliding door to fail safe in open position.
EX-03-00-02	Hormann	Galvanised Steel PPC Fire Exit	Painted Anthracite RAL 7016.	2110	1135	2110	1140	Push Bar To Open - Fire Exit Keep Clear - Fire Door Keep Shut	Panic Latch System	SS Restrictor Stay	
EX-03-00-03	Hormann	Galvanised Steel PPC Fire Exit	Painted Anthracite RAL 7016.	2110	1135	2110	1140	Push Bar To Open - Fire Exit Keep Clear - Fire Door Keep Shut	Panic Latch System	SS Restrictor Stay	
EX-03-00-04	Hormann	Galvanised Steel PPC Fire Exit	Painted Anthracite RAL 7016.	2110	1135	2110	1140	Push Bar To Open - Fire Exit Keep Clear - Fire Door Keep Shut	Panic Latch System	SS Restrictor Stay	Door head lifted as instructed by Winvic with raised threshold.
EX-03-00-05	Hormann	Galvanised Steel PPC Fire Exit	Painted Anthracite RAL 7016.	2110	1135	2110	1140	Push Bar To Open - Fire Exit Keep Clear - Fire Door Keep Shut	Panic Latch System	SS Restrictor Stay	Door head lifted as instructed by Winvic with raised threshold.
EX-03-00-06	Hormann	Galvanised Steel PPC Fire Exit	Painted White RAL 9003	2110	1135	2110	1140	Push Bar To Open - Fire Exit Keep Clear - Fire Door Keep Shut	Panic Latch System	SS Restrictor Stay	Door head lifted as instructed by Winvic with raised threshold.

Refer to AEW drawing P23012-AEW-03-XX-SH-A-7002 for details of EX-03-00-01



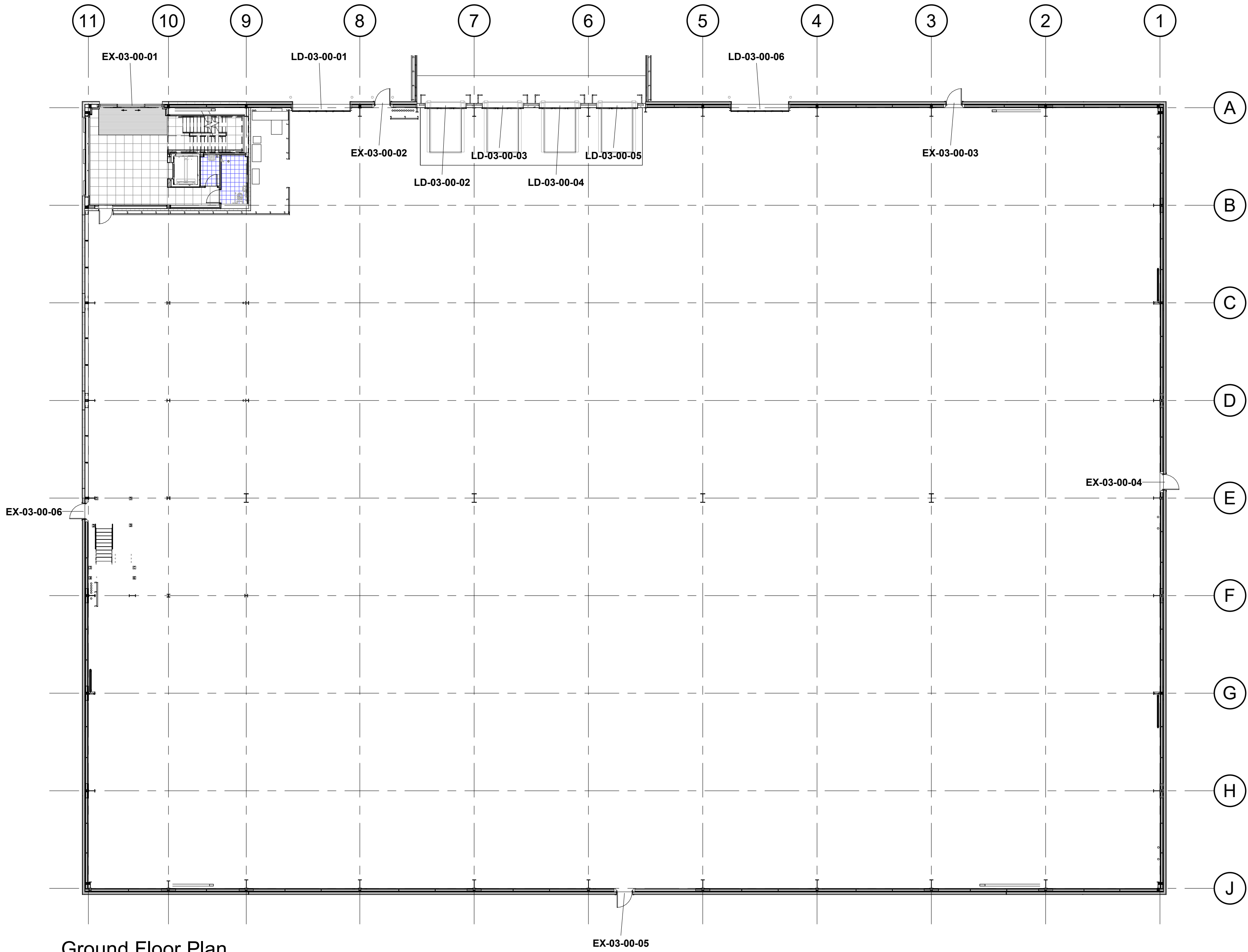
Typical Personnel Door Elevation

Scale @ 1 : 10

Refer to AEW drawing P23012-AEW-03-00-DR-A-5100 for slab edge/ threshold details. Doors EX-03-00-04/05/06 to be lifted as instructed by Winvic.

Refer to AEW drawing P23012-AEW-03-XX-DR-A-5004 and P23012-AEW-03-XX-DR-A-5005 for loading door details

Loading Door Schedule								
Number	Manufacturer	Description	Frame	Door C.O. Height	Door C.O. Width	Door S.O. Height	Door S.O. Width	Comments
			Finish					
LD-03-00-01	Hormann	Sectional insulated vertical lift level access loading doors. External colour: Anthracite RAL 7016. Internal colour: Off White RAL 9002.	Anthracite RAL 7016	4800	4000	4875	4120	Refer to Specialist sub-contractor information for details.
LD-03-00-02	Hormann	Sectional insulated vertical lift dock loading doors. External colour: Anthracite RAL 7016. Internal colour: Off White RAL 9002.	Anthracite RAL 7016	3000	2860	3000	2860	Refer to Specialist sub-contractor information for details.
LD-03-00-03	Hormann	Sectional insulated vertical lift dock loading doors. External colour: Anthracite RAL 7016. Internal colour: Off White RAL 9002.	Anthracite RAL 7016	3000	2860	3000	2860	Refer to Specialist sub-contractor information for details.
LD-03-00-04	Hormann	Sectional insulated vertical lift dock loading doors. External colour: Anthracite RAL 7016. Internal colour: Off White RAL 9002.	Anthracite RAL 7016	3000	2860	3000	2860	Refer to Specialist sub-contractor information for details.
LD-03-00-05	Hormann	Sectional insulated vertical lift dock loading doors. External colour: Anthracite RAL 7016. Internal colour: Off White RAL 9002.	Anthracite RAL 7016	3000	2860	3000	2860	Refer to Specialist sub-contractor information for details.
LD-03-00-06	Hormann	Sectional insulated vertical lift level access loading doors. External colour: Anthracite RAL 7016. Internal colour: Off White RAL 9002.	Anthracite RAL 7016	4800	4000	4875	4120	Refer to Specialist sub-contractor information for details.



Scale Bars		TO BE USED ONLY AS GUIDANCE	
1:100	mm	0 1000 2000 3000 4000 5000	
1:200	mm	0 1000 2000 3000 4000 5000	
1:500	M	0 5 10 15 20 25	
1:1250	M	0 10 20 30 40 50 60 70	

NOTES

- All dimensions and levels are to be checked on site.
 - Any discrepancies are to be reported to the architect before any work commences
 - This drawing shall not be scaled to ascertain any dimensions. Work to figured dimensions only.
 - This drawing shall not be reproduced without express written permission from AEW.
 - Title overlay drawings and ownership boundaries are produced using all reasonable endeavors. AEW cannot be responsible for the accuracy or scale discrepancy of base plans supplied to them.
 - All works are to be undertaken in accordance with Building Regulations and the latest British Standards.
 - All proprietary materials and products are to be used strictly in accordance with the manufacturers recommendations
- This drawing contains the following model files: -
- 12737-AEW-03-XX-M3-A-0005

CDM 2015

Client notified of duties:

Principal Designer: **Winvic Construction**

Unless noted below, all known hazards have been highlighted on the drawing.

The front entrance door and all office external doors and frames will be manufactured in Kawneer Glostal or Schuco polyester powder colour coated aluminium sections with concealed overhead door closers. All doors will be glazed to the recommendation of BS 952 and BS CP 6262 in laminated or safety glass to match windows and curtain walling.

A letter plate is to be provided adjacent to the main entrance doors.

Main entrance doors will be automatic sliding to meet all relevant accessibility guidance

FINAL CONSTRUCTION ISSUE

IN THE ABSENCE OF INFORMATION FROM THE PRINCIPAL CONTRACTOR TO THE CONTRARY, THE INFORMATION CONTAINED IN THIS DRAWING IS GIVEN IN GOOD FAITH AND IS UNDERSTOOD TO BE CORRECT BY AEW. ANY PERSON CARRYING OUT ANY WORKS BELOW GROUND MUST SATISFY THEMSELVES OF THE POSITION OF UNDERGROUND SERVICES AND DRAINAGE. AEW WILL NOT BE LIABLE FOR OCCURRENCES ARISING OUT OF FAILURE TO CHECK ON SITE.

C4	14/05/24	FINAL CONSTRUCTION ISSUE	TF	DOH
C3	20/11/23	Structural opening within the PPC updated as confirmed by the Employer in Progress Meeting No. 2 and by email 20.11.23	TF	DOH
C2	15/11/23	Main entrance door updated to sliding door as confirmed by the Employer by email 14.11.23	TF	DOH
C1	08/11/23	ISSUED FOR CONSTRUCTION	TF	DOH
P02	28/09/23	General Coordination Update Issue	TF	DOH
P01	12/09/23	Initial Issue	TF	DOH
Rev	Date	Description	Drawn by	Checked By

Status: CR

Purpose of Issue: FINAL CONSTRUCTION ISSUE

drawing stage: **Stage 5 Construction**

client: **Panattoni**

project: **Plot 3, Great Bank Road, Bolton**

drawing title: **External Door Schedule**

date: 10/18/22

scale @ A1: As indicated

drawn: TF

checked: DOH

Rev

C4

Dwg No

P23012-AEW-03-00-SH-A-7001

Rev

C4

Dwg No

P23012-AEW-03-00-SH-A-7001

Rev

C4

Rev

C4

Rev

C4

Rev

C4

Rev

C4

Rev

C4

Rev

C4

Rev

C4

Rev

C4

Rev

C4

Rev

C4

Rev

C4

Rev

C4

Rev

C4

Rev

C4

Rev

C4

Rev

C4

Rev

C4

Rev

C4

Rev

C4

Rev

C4

Rev

C4

Rev

C4

Rev

C4

Rev

C4

Rev

C4

Rev

C4

Rev

C4

Rev

C4

Rev

C4

Rev

C4

Rev

C4

Rev

C4

Rev

C4

Rev

C4

Rev

C4

Rev

C4

Rev

C4

Rev

C4

Rev

C4

Rev

C4

Rev

C4

Rev

C4

Rev

C4

Rev

C4

Rev

C4

Rev

C4

Rev

C4

Rev

C4

Rev

C4

Rev

C4

Rev

C4

Rev

C4

Rev

C4

Rev

C4

Rev

C4

Rev

C4

Rev

C4

Rev

C4

Rev

C4

Rev

C4

Rev

C4

Rev

C4

Rev

C4

Rev

C4

Rev

C4

Rev

C4

Rev

C4

Rev

C4

Rev

C4

Rev

C4

Rev

C4

Rev

C4

Rev

C4

Rev

C4

Rev

C4

Rev

C4

Rev

C4

Rev

C4

Rev

C4

Rev

C4

Rev

C4

Rev

C4

Rev

C4

Rev

C4

Rev

C4

Rev

C4

Rev

C4

Rev

C4

Rev

C4

Rev

C4

Rev

C4

Rev

C4

Rev

C4

Rev

C4

Rev

C4

Rev

C4

Rev

C4

Rev

C4

Rev

C4

Rev

C4

Rev

C4

Rev

C4

Rev

C4

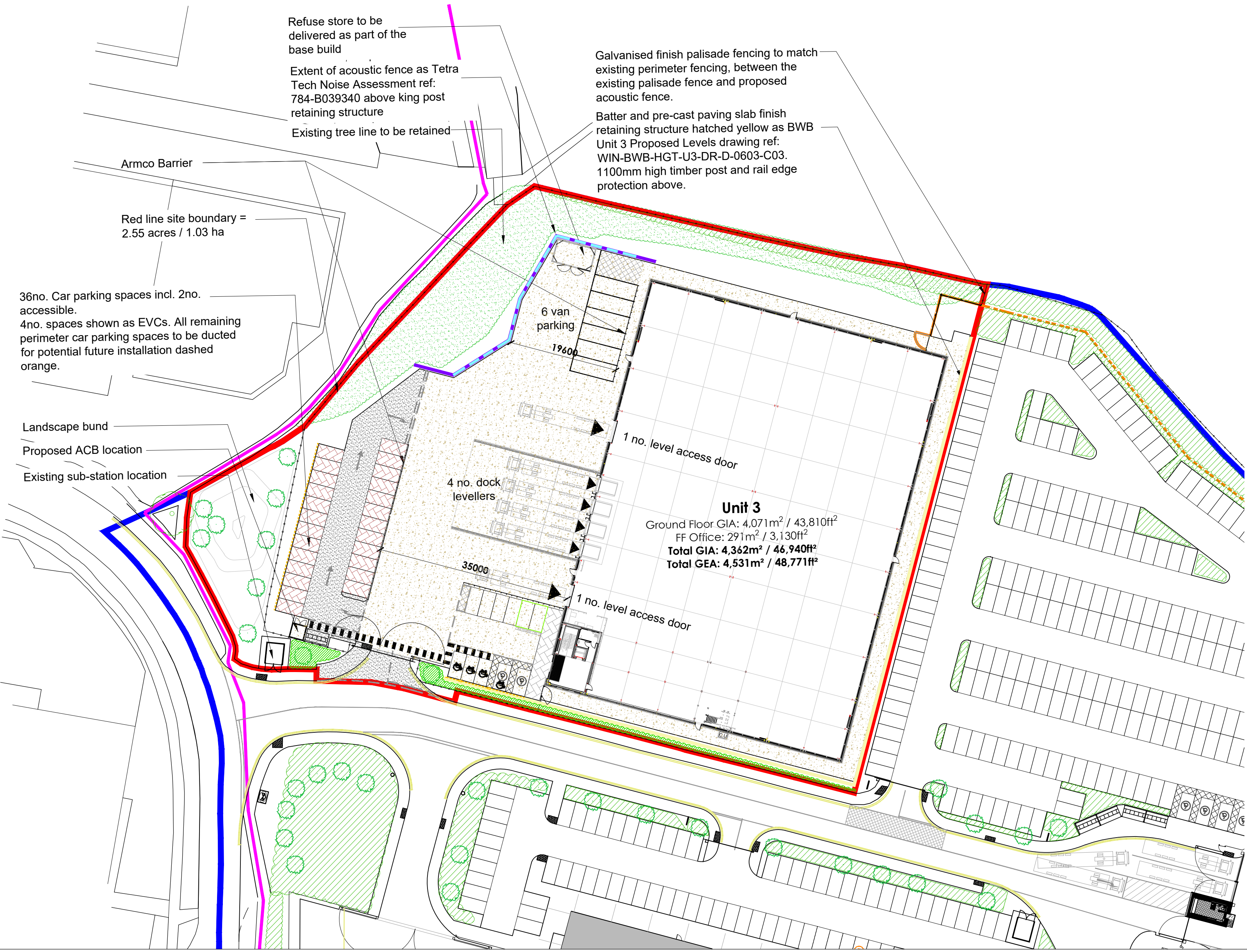
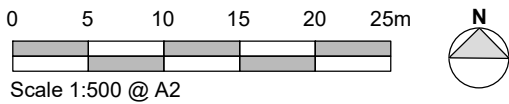
Rev

C4

Rev

C4

Rev



- All dimensions and levels are to be checked on site.
- Any discrepancies are to be reported to the architect before any work commences
- This drawing shall not be scaled to ascertain any dimensions. Work to figured dimensions only.
- This drawing shall not be reproduced without express written permission from AEW.
- Title overlay drawings and ownership boundaries are produced using all reasonable endeavors. AEW cannot be responsible for the accuracy or scale discrepancy of base plans supplied to them.
- All works are to be undertaken in accordance with Building Regulations and the latest British Standards.
- All proprietary materials and products are to be used strictly in accordance with the manufacturers recommendations.

CDM 2015

Client notified of duties:
Principal Designer: **Winvic Construction**
Unless noted below, all known hazards have been highlighted on the drawing:

- Concrete service yards and perimeter path. Build up to Structural Engineer's details
 - Block Pavious laid in herringbone pattern to car park spaces (Brett - Omega Brindle). White block paving to delineate spaces and symbols.
 - Tarmac Road and Pavements. Build up to Structural Engineer's details
 - Block Pavious laid in herringbone pattern in front of offices (Brett - Omega Natural).
- Tactile paving to match existing site colours.

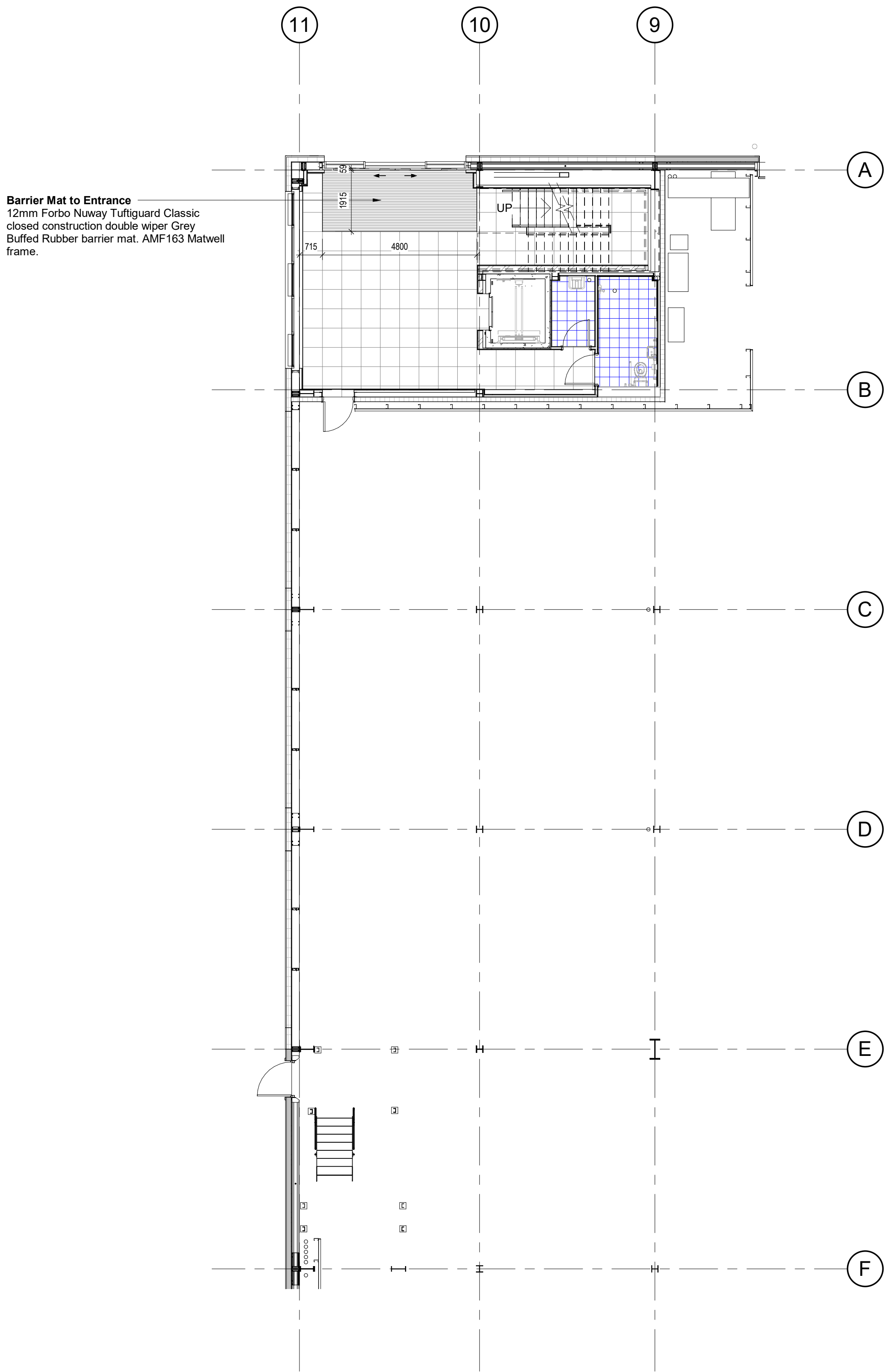
FINAL CONSTRUCTION ISSUE

IN THE ABSENCE OF INFORMATION FROM THE PRINCIPAL CONTRACTOR TO THE CONTRARY, THE INFORMATION CONTAINED IN THIS DRAWING IS GIVEN IN GOOD FAITH AND IS UNDERSTOOD TO BE CORRECT BY AEW. ANY PERSON CARRYING OUT ANY WORKS BELOW GROUND MUST SATISFY THEMSELVES OF THE POSITION OF UNDERGROUND SERVICES AND DRAINAGE. AEW WILL NOT BE LIABLE FOR OCCURANCES ARISING OUT OF FAILURE TO CHECK ON SITE.

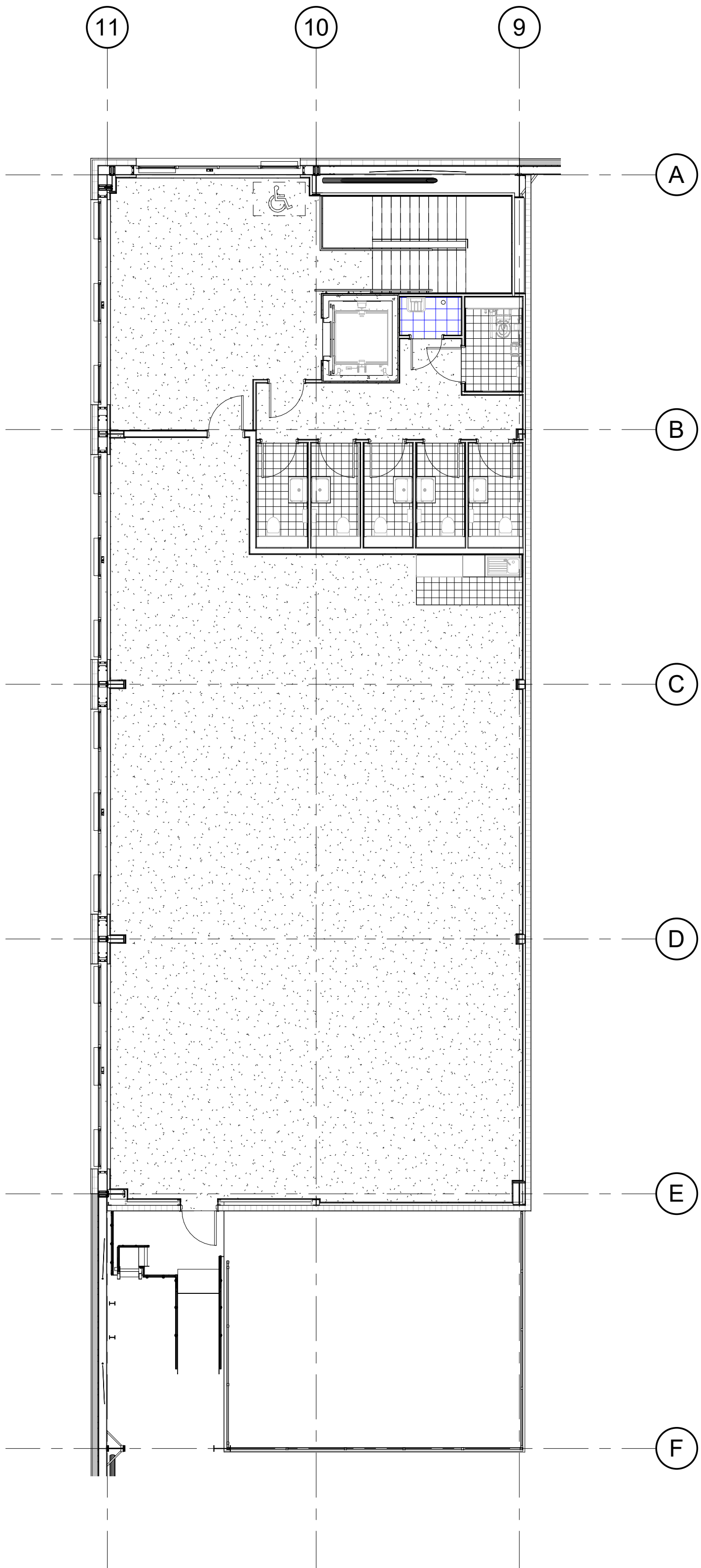
C3	22/04/24	TF	DOH
FINAL CONSTRUCTION ISSUE			
C2	18/03/24	TF	DOH
Car park paving colour updated as instructed by Winvic.			
C1	27/10/23	TF	DOH
ISSUED FOR CONSTRUCTION			
P1	14/06/23	HN	TF
Initial issue			
REV	Date	Drawn by: -	Checked by: -
Status	Purpose of Issue		
CR	FINAL CONSTRUCTION ISSUE		
drawing stage	Stage 5		
client	Panattoni		

project **Plot 3 - Great Bank Road, Bolton**
drawing title **Proposed External Finishes Plan**

date 14/06/23 drawn HN
scale@A2 1:500 checked TF



Ground Floor Finishes Plan
Scale @ 1 : 100



01_GA Office Floor Finishes
Scale @ 1 : 100

- Barrier Mat to Entrance**
12mm Forbo Nuway Tuftguard Classic closed construction double wiper Grey Buffed Rubber barrier mat.
- Ceramic Floor Tiles to Reception & Lift Car**
600mmx600mmx11mm ceramic floor tiles Johnson Tiles Minerals Range 'Limestone Grip' MINSDN.
Skirtings - 600mmx30mmx9mm round-top ceramic skirting tiles Johnson Tiles Minerals Range 'Limestone Grip' MINSDN to match.
- Ceramic Floor Tiles to Shower & Cleaners Stores**
300mmx300mmx8.3mm Johnson Tiles Kerastar KET558 Clay Speckle Rocktop slip-resistant floor tiles.
Skirtings - 300mmx100mmx8.3mm Johnson Tiles Kerastar KET558 Clay Speckle Rocktop to match.
- Ceramic Floor Tiles to WC Areas & Kitchenette**
200mmx200mmx8.3mm ceramic floor tiles Johnson Tiles Kerastar KER558 Clay Speckle Natural.
Skirtings - 200mmx100mmx8.3mm ceramic floor tiles Johnson Tiles Kerastar KER558 Clay Speckle Natural to match.
(No skirting required to the Kitchenette)
- Carpet Tiles to Offices, circulation areas and Landings**
Interface Transformation 'Fermi' 1628010 carpet tiles. Suitable transition strip required between carpet and tiled areas.
- Main Stair Nosings to Stairs**
Quantum ZHF1 aluminium nosing with PVC insert. Colour: Mist
- Secondary Steel stairs treads to be suitably textured**

Scale Bars

TO BE USED ONLY AS GUIDANCE			
1:100	mm	1:100	mm
1:200	mm	1:200	mm
1:500	m	1:500	m
1:1000	m	1:1000	m

NOTES

- All dimensions and levels are to be checked on site.
- Any discrepancies are to be reported to the architect before any work commences.
- This drawing shall not be scaled to ascertain any dimensions. Work to figured dimensions only.
- This drawing shall not be reproduced without express written permission from AEW.
- Title overlay drawings and ownership boundaries are produced using all reasonable endeavors. AEW cannot be responsible for the accuracy or scale discrepancy of base plans supplied to them.
- All works are to be undertaken in accordance with Building Regulations and the latest British Standards.
- All proprietary materials and products are to be used strictly in accordance with the manufacturers recommendations.

This drawing contains the following model files: -

12737-AEW-03-XX-M3-A-0005

CDM 2015

Client notified of duties:
Principal Designer: **Winvic Construction**

Unless noted below, all known hazards have been highlighted on the drawing.

FINAL CONSTRUCTION ISSUE

IN THE ABSENCE OF INFORMATION FROM THE PRINCIPAL CONTRACTOR TO THE CONTRARY, THE INFORMATION CONTAINED IN THIS DRAWING IS GIVEN IN GOOD FAITH AND IS UNDERSTOOD TO BE CORRECT BY ALL. ANY PERSON CARRYING OUT ANY WORKS BELOW GROUND MUST SAFELY THEMSELVES OF THE POSITION OF UNDERGROUND SERVICES AND DRAINAGE. AEW WILL NOT BE LIABLE FOR OCCURRENCES ARISING OUT OF FAILURE TO CHECK ON SITE.

C4	14/05/24	FINAL CONSTRUCTION ISSUE	TF	DOH
C3	14/05/24	Issue for update as instructed by Winvic.	TF	DOH
C2	16/03/24	Updated to match confirmed Finishes Schedule	TF/TF	DOH
C1	08/11/23	ISSUED FOR CONSTRUCTION	TF	DOH
PS2	28/09/23	General Coordination Update Issue	TF	DOH
PS1	12/09/23	Initial Issue	TF	DOH
Rev	Date	Description	Drawn by	Checked by

Status: **CR** Purpose of Issue: **FINAL CONSTRUCTION ISSUE**

drawing stage: **Stage 5 Construction**

client: **Panattoni**

project: **Plot 3, Great Bank Road, Bolton**

drawing title: **Floor Finishes Plan**

date: 10/18/22 drawn: TF
scale @ A0 As indicated checked: DOH

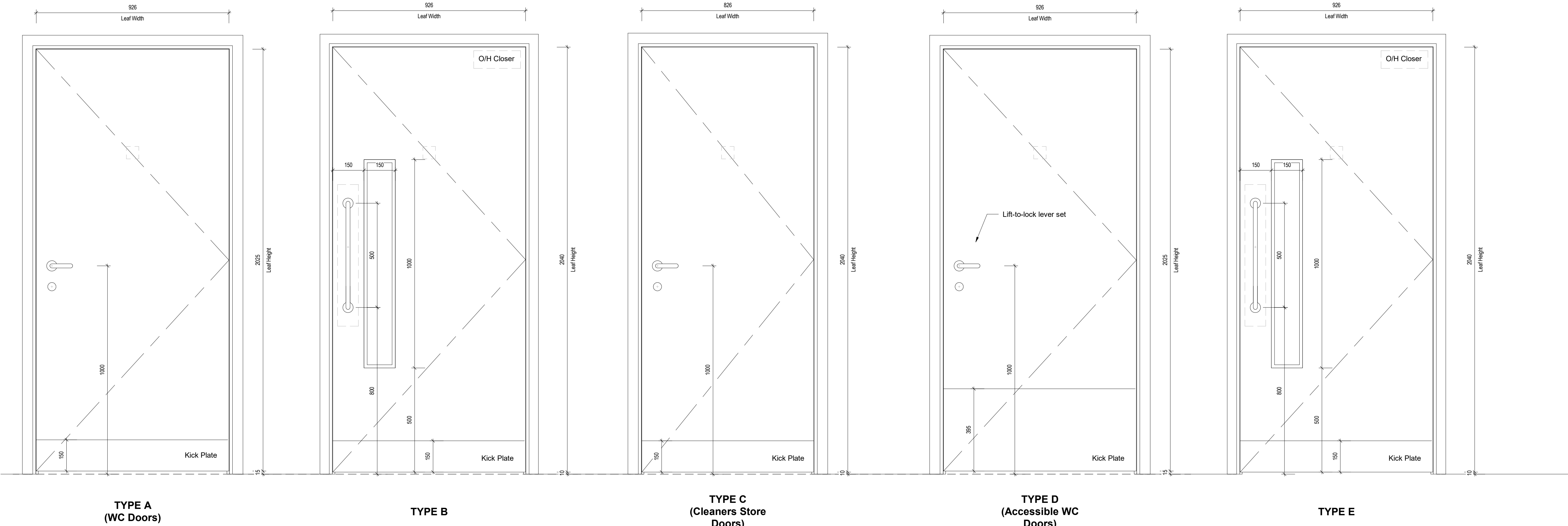
Rev: **C4**

Drawn by: **P23012-AEW-03-ZZ-DR-A-2009**

aew architects
0161 714 4370
www.aewarchitects.com
aew

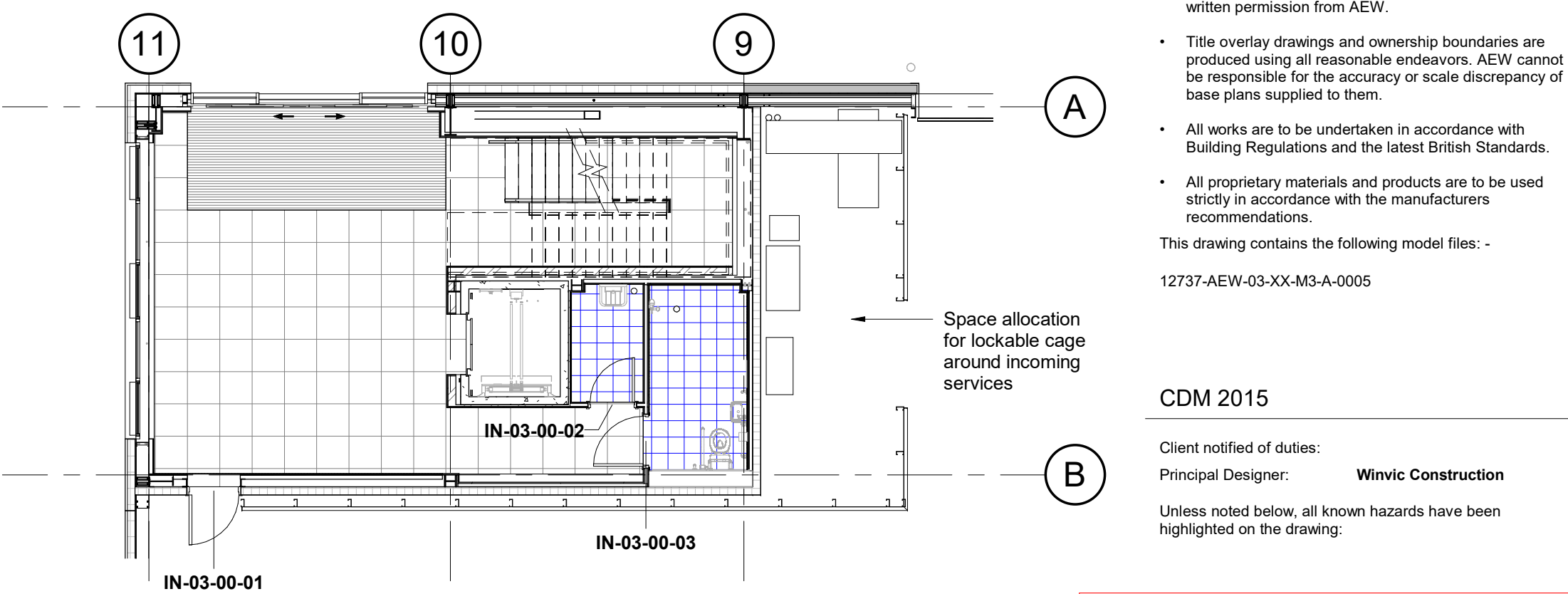
Internal Door Schedule											
Number	Type Mark	Location	Description	Width (A)	Height	Thickness	Leaf	Material	Frame	Fire	Comments
00 Ground Floor											
IN-03-00-01	INT-E	Compartment Wall	Internal Single Door	926	2040	54	Non-tropical American light oak hardwood veneers and concealed lipped	Non-tropical American light oak hardwood veneers and concealed lipped	60		Door thickness to specialist subcontractor details to meet minimum fire rating and u-value
IN-03-00-02	INT-C	Cleaners Store	Internal Single Door	826	2040	44	Non-tropical American light oak hardwood veneers and concealed lipped	Non-tropical American light oak hardwood veneers and concealed lipped	30		Door thickness to specialist subcontractor details to meet minimum fire rating
IN-03-00-03	INT-D	Accessible WC and Shower	Internal Single Door	926	2025	44	Non-tropical American light oak hardwood veneers and concealed lipped	Non-tropical American light oak hardwood veneers and concealed lipped			Door thickness to specialist subcontractor details
First Floor											
IN-03-01-01	INT-B	WC Lobby	Internal Single Door	926	2040	44	Non-tropical American light oak hardwood veneers and concealed lipped	Non-tropical American light oak hardwood veneers and concealed lipped			Door thickness to specialist subcontractor details
IN-03-01-02	INT-C	Cleaners Store	Internal Single Door	826	2040	44	Non-tropical American light oak hardwood veneers and concealed lipped	Non-tropical American light oak hardwood veneers and concealed lipped	30		Door thickness to specialist subcontractor details to meet minimum fire rating
IN-03-01-03	INT-D	Accessible WC	Internal Single Door	926	2025	44	Non-tropical American light oak hardwood veneers and concealed lipped	Non-tropical American light oak hardwood veneers and concealed lipped			Door thickness to specialist subcontractor details
IN-03-01-04	INT-A	WC	Internal Single Door	926	2025	44	Non-tropical American light oak hardwood veneers and concealed lipped	Non-tropical American light oak hardwood veneers and concealed lipped			Door thickness to specialist subcontractor details
IN-03-01-05	INT-A	WC	Internal Single Door	926	2025	44	Non-tropical American light oak hardwood veneers and concealed lipped	Non-tropical American light oak hardwood veneers and concealed lipped			Door thickness to specialist subcontractor details
IN-03-01-06	INT-A	WC	Internal Single Door	926	2025	44	Non-tropical American light oak hardwood veneers and concealed lipped	Non-tropical American light oak hardwood veneers and concealed lipped			Door thickness to specialist subcontractor details
IN-03-01-07	INT-A	WC	Internal Single Door	926	2025	44	Non-tropical American light oak hardwood veneers and concealed lipped	Non-tropical American light oak hardwood veneers and concealed lipped			Door thickness to specialist subcontractor details
IN-03-01-08	INT-A	WC	Internal Single Door	926	2025	44	Non-tropical American light oak hardwood veneers and concealed lipped	Non-tropical American light oak hardwood veneers and concealed lipped			Door thickness to specialist subcontractor details
IN-03-01-09	INT-B	Office-Landing	Internal Single Door	926	2040	44	Non-tropical American light oak hardwood veneers and concealed lipped	Non-tropical American light oak hardwood veneers and concealed lipped	30		Door thickness to specialist subcontractor details to meet minimum fire rating
IN-03-01-10	INT-E	Secondary Stair	Internal Single Door	926	2040	54	Non-tropical American light oak hardwood veneers and concealed lipped	Non-tropical American light oak hardwood veneers and concealed lipped	60		Door thickness to specialist subcontractor details to meet minimum fire rating and u-value

Internal doors to have appropriate fire rating as noted and be fitted with intumescent strips, smoke seals, door closers and vision panels in accordance with BS 8300 and Approved Documents B and M.

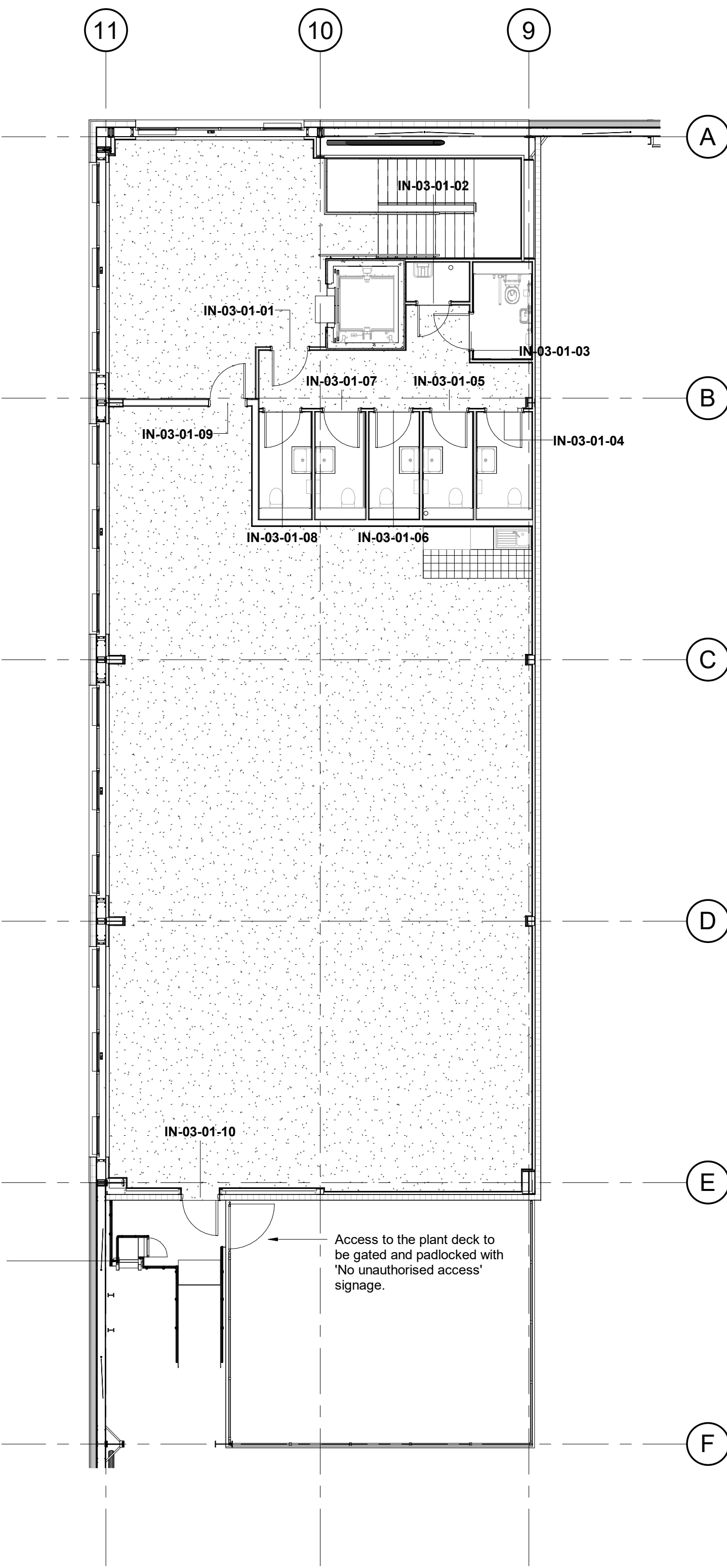


Internal Door Types Elevation
Scale @ 1 : 10

Internal Door Ironmongery Schedule															
Number	Type Mark	Location	Description	Hinges (Pairs)	Handle Type	Self Closing	Thumb Turn	Pull Handle(s)	Push Plate(s)	Kick Plate	Door Stop	Escutcheon	Coat Hook	Signage	Comments
00 Ground Floor															
IN-03-00-01	INT-E	Compartment Wall	Internal Single Door	1.5	1no. Pull Handle	Yes	No	1	1	2no. 150mm High	1	No	No	1no. Fire Door, Keep Shut	Door thickness to specialist subcontractor details to meet minimum fire rating and u-value
IN-03-00-02	INT-C	Cleaners Store	Internal Single Door	1.5	2no. Levers	No	No	No	No	2no. 150mm High	1	1	No	1no. Fire Door, Keep Shut	Door thickness to specialist subcontractor details to meet minimum fire rating
IN-03-00-03	INT-D	Accessible WC and Shower	Internal Single Door	1.5	Lift-to-lock lever set	No	No	No	No	2no. 400mm High	1	No	1	1no. Appropriate Accessible WC	Door thickness to specialist subcontractor details
First Floor															
IN-03-01-01	INT-B	WC Lobby	Internal Single Door	1.5	1no. Pull Handle	Yes	No	1	1	2no. 150mm High	1	No	No	1no. Appropriate WC	Door thickness to specialist subcontractor details
IN-03-01-02	INT-C	Cleaners Store	Internal Single Door	1.5	2no. Levers	No	No	No	No	2no. 150mm High	1	1	No	1no. Fire Door, Keep Shut	Door thickness to specialist subcontractor details to meet minimum fire rating
IN-03-01-03	INT-D	Accessible WC	Internal Single Door	1.5	Lift-to-lock lever set	No	No	No	No	2no. 400mm High	1	No	1	1no. Appropriate Accessible WC	Door thickness to specialist subcontractor details
IN-03-01-04	INT-A	WC	Internal Single Door	1.5	2no. Levers	No	Yes	No	No	2no. 150mm High	1	No	1	1no. Appropriate WC	Door thickness to specialist subcontractor details
IN-03-01-05	INT-A	WC	Internal Single Door	1.5	2no. Levers	No	Yes	No	No	2no. 150mm High	1	No	1	1no. Appropriate WC	Door thickness to specialist subcontractor details
IN-03-01-06	INT-A	WC	Internal Single Door	1.5	2no. Levers	No	Yes	No	No	2no. 150mm High	1	No	1	1no. Appropriate WC	Door thickness to specialist subcontractor details
IN-03-01-07	INT-A	WC	Internal Single Door	1.5	2no. Levers	No	Yes	No	No	2no. 150mm High	1	No	1	1no. Appropriate WC	Door thickness to specialist subcontractor details
IN-03-01-08	INT-A	WC	Internal Single Door	1.5	2no. Levers	No	Yes	No	No	2no. 150mm High	1	No	1	1no. Appropriate WC	Door thickness to specialist subcontractor details
IN-03-01-09	INT-B	Office-Landing	Internal Single Door	1.5	1no. Pull Handle	Yes	No	1	1	2no. 150mm High	1	No	No	1no. Fire Door, Keep Shut	Door thickness to specialist subcontractor details to meet minimum fire rating
IN-03-01-10	INT-E	Secondary Stair	Internal Single Door	1.5	1no. Pull Handle	Yes	No	1	1	2no. 150mm High	1	No	No	1no. Fire Door, Keep Shut	Door thickness to specialist subcontractor details to meet minimum fire rating and u-value



Ground Floor Plan
Scale @ 1 : 100



First Floor Plan
Scale @ 1 : 100

- NOTES
- All dimensions and levels are to be checked on site.
 - Any discrepancies are to be reported to the architect before any work commences.
 - This drawing shall not be scaled to ascertain any dimensions. Work to figured dimensions only.
 - This drawing shall not be reproduced without express written permission from AEW.
 - Title overlay drawings and ownership boundaries are produced using all reasonable endeavours. AEW cannot be responsible for the accuracy or scale discrepancy of base plans supplied to them.
 - All works are to be undertaken in accordance with Building Regulations and the latest British Standards.
 - All proprietary materials and products are to be used strictly in accordance with the manufacturers recommendations.
- This drawing contains the following model files: -
- 12737-AEW-03-XX-M3-A-0005

CDM 2015

Client notified of duties:
Principal Designer: **Wimlic Construction**
Unless noted below, all known hazards have been highlighted on the drawing.

Internal doors to be solid core flush doors with non-tropical American light oak hardwood veneers and concealed lipped. Frames and architraves to be hardwood, to match door veneers. The source of all hardwoods to be incorporated within the works is to be disclosed and approved and shall be procured from well managed and regulated sources.

Ironmongery will be appropriate to the location of the door and will be Grade 315 stainless steel door furniture with ancillary fittings. The ironmongery will be from the FID line obtained from Tuscan Hardware, Unit 2 Alder Mill Business Park, CV9 3AH.

FINAL CONSTRUCTION ISSUE

IN THE ABSENCE OF INFORMATION FROM THE PRINCIPAL CONTRACTOR TO THE CONTRARY, THE INFORMATION CONTAINED IN THIS DRAWING IS GIVEN IN GOOD FAITH AND IS UNDERSTOOD TO BE CORRECT BY AEW. ANY PERSON CARRYING OUT ANY WORKS BELOW GROUND MUST SAFEN THEMSELVES OF THE POSITION OF UNDERGROUND SERVICES AND DRAINAGE. AEW WILL NOT BE LIABLE FOR OCCURRENCES ARISING OUT OF FAILURE TO CHECK ON SITE.

C8	17/06/24	Restricted access gates shown as intended by client	TF	DOH
C7	14/05/24	FINAL CONSTRUCTION ISSUE	TF	DOH
C6	13/03/24	Updated to Bespoke comments	TF	DOH
C5	08/12/23	Door leaf amended to Bespoke comments	TF	DOH
C4	07/12/23	Door furniture amended to GAC comments	TF	DOH
C3	06/12/23	Door Type E added to the schedule as advised by Bespoke	TF	DOH
C2	27/11/23	Updated to Bespoke comments	TF	DOH
C1	08/11/23	ISSUES FOR CONSTRUCTION	TF	DOH
PO2	26/09/23	General Construction Update	TF	DOH
PO1	12/09/23	Initial issue	TF	DOH
Rev	Date	Description	Drawn By	Checked By
CR		Purpose of issue FINAL CONSTRUCTION ISSUE		

drawing stage: **Stage 5 Construction**

client:

Panattoni

project:

Plot 3, Great Bank Road, Bolton

drawing title:

Internal Door Schedule

date: 30/09/22 drawn: TF
scale @ A0 As indicated checked: DOH

Rev

C8

Dwg No: **P23012-AEW-03-ZZ-SH-A-7000**

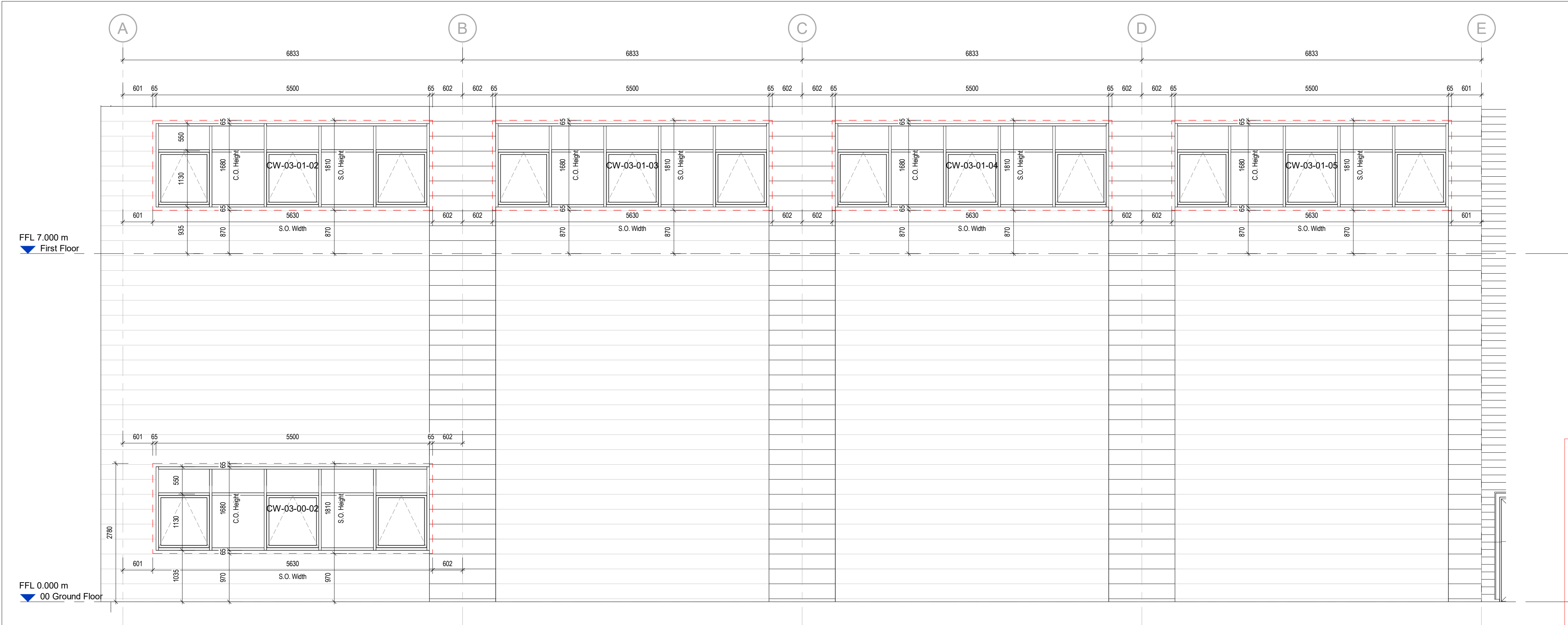
Drawn By:

aew architects

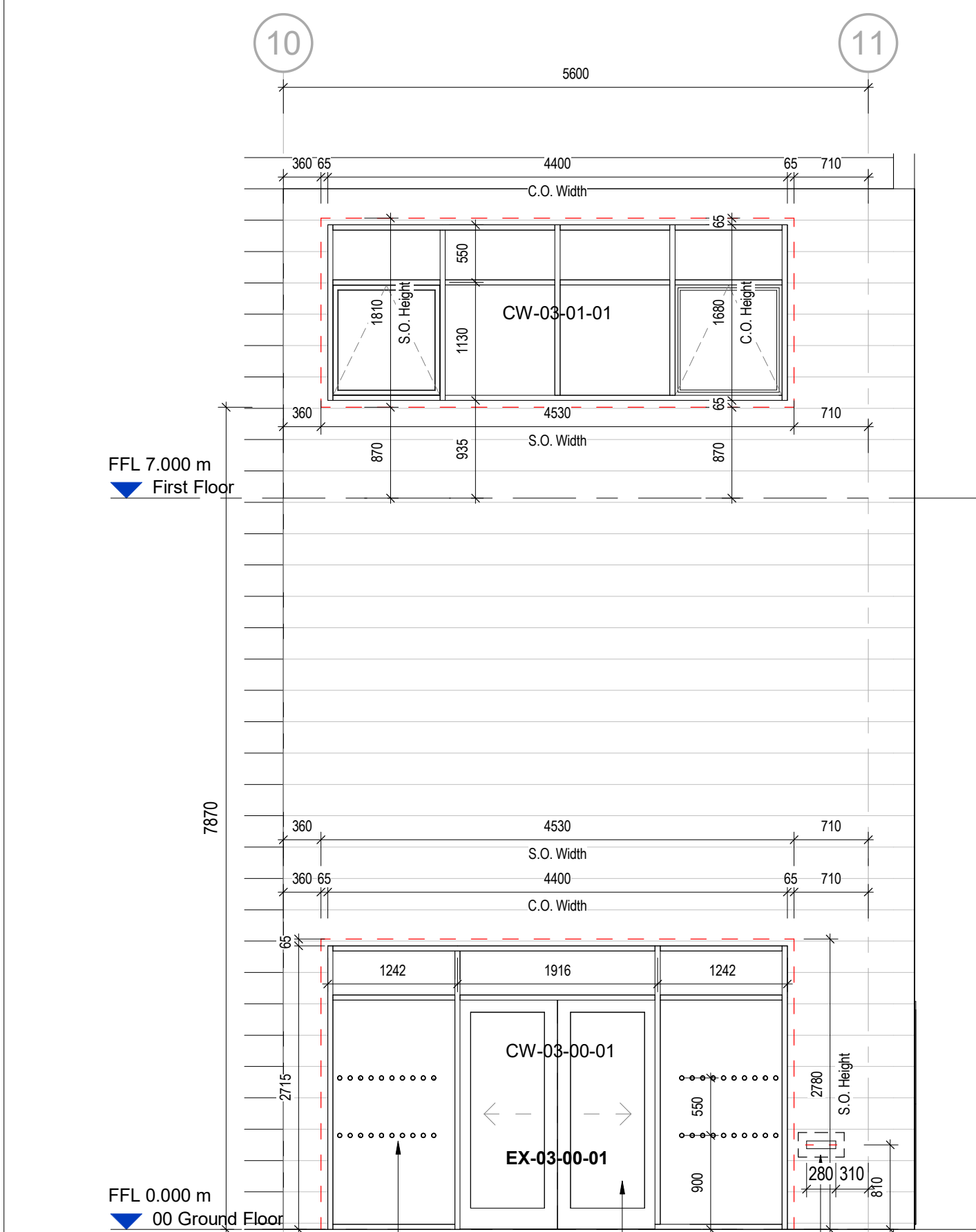
0161 514 4370

www.aewarchitects.com

aew

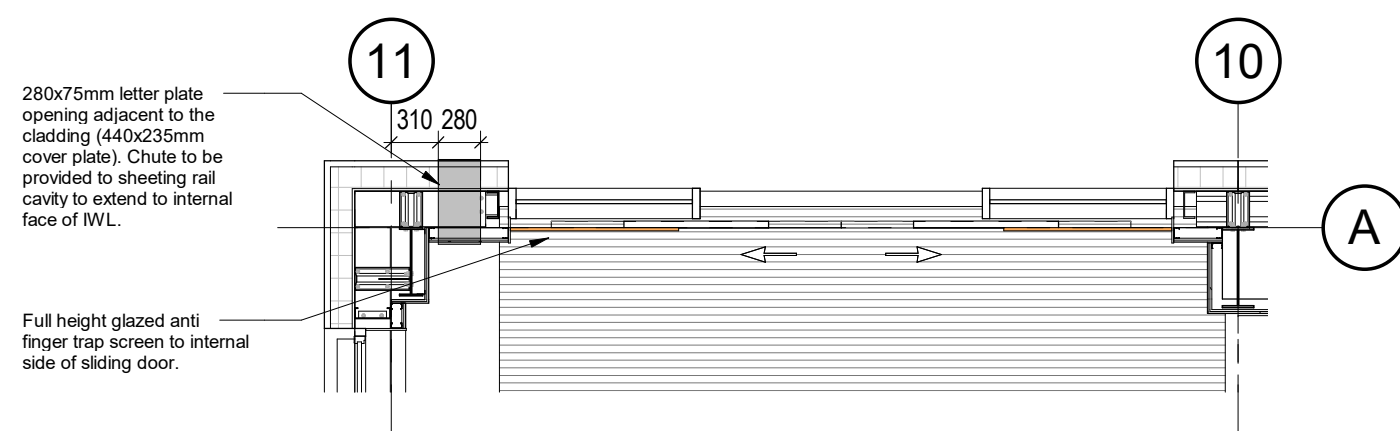


1 South Elevation
Scale @ 1 : 50

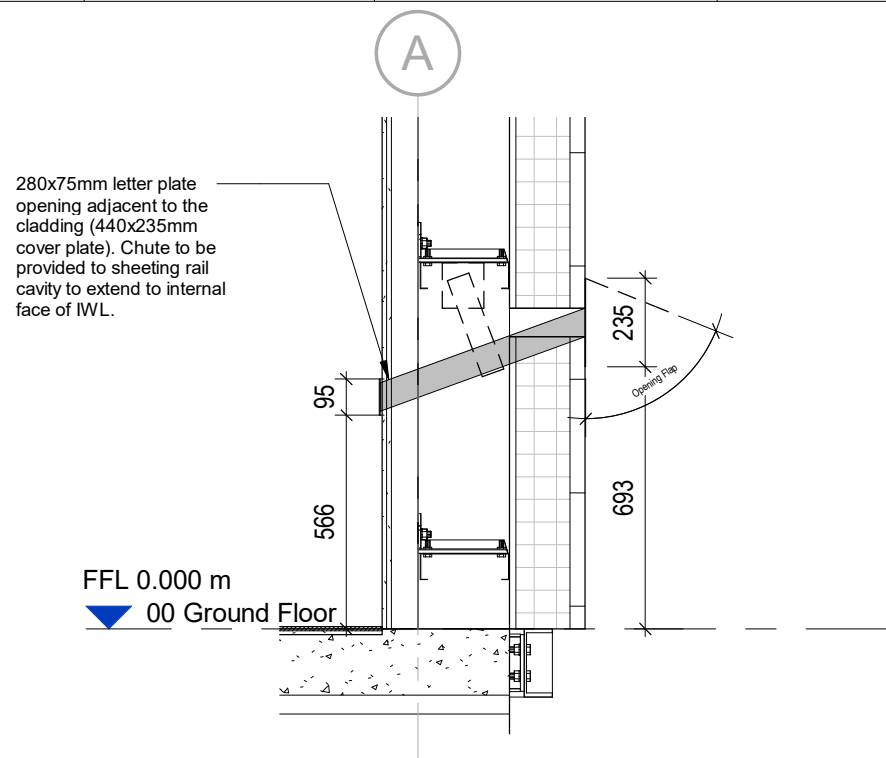


2 West Elevation
Scale @ 1 : 50

Window Schedule												
Mark	Location	S.O.Height	S.O.Width	C.O.Height	C.O.Width	Head, Cill & Jamb Insulation	Material	Finish	Int. Frame Colour	Ext. Frame Colour	Manufacturer	Comments
00 Ground Floor												
CW-03-00-01	West Elevation - Main Entrance	2780	4530	2715	4400	65	PPC aluminium frames and double glazed units.	PPC aluminium	Anthracite RAL 7016	Anthracite RAL 7016	Alutech Glazing	Includes main entrance sliding glazed double door EX-03-00-01.
CW-03-00-02	South Elevation - Ground Floor	1810	5630	1680	5500	65	PPC aluminium frames and double glazed units.	PPC aluminium	Anthracite RAL 7016	Anthracite RAL 7016	Alutech Glazing	3no. Top hung opening light to bottom section of window. Refer to specialist subcontracts information.
First Floor												
CW-03-01-01	West Elevation - First Floor	1810	4530	1680	4400	65	PPC aluminium frames and double glazed units.	PPC aluminium	Anthracite RAL 7016	Anthracite RAL 7016	Alutech Glazing	2no. Top hung opening light to bottom section of window. Refer to specialist subcontracts information.
CW-03-01-02	South Elevation - First Floor	1810	5630	1680	5500	65	PPC aluminium frames and double glazed units.	PPC aluminium	Anthracite RAL 7016	Anthracite RAL 7016	Alutech Glazing	3no. Top hung opening light to bottom section of window. Refer to specialist subcontracts information.
CW-03-01-03	South Elevation - First Floor	1810	5630	1680	5500	65	PPC aluminium frames and double glazed units.	PPC aluminium	Anthracite RAL 7016	Anthracite RAL 7016	Alutech Glazing	3no. Top hung opening light to bottom section of window. Refer to specialist subcontracts information.
CW-03-01-04	South Elevation - First Floor	1810	5630	1680	5500	65	PPC aluminium frames and double glazed units.	PPC aluminium	Anthracite RAL 7016	Anthracite RAL 7016	Alutech Glazing	3no. Top hung opening light to bottom section of window. Refer to specialist subcontracts information.
CW-03-01-05	South Elevation - First Floor	1810	5630	1680	5500	65	PPC aluminium frames and double glazed units.	PPC aluminium	Anthracite RAL 7016	Anthracite RAL 7016	Alutech Glazing	3no. Top hung opening light to bottom section of window. Refer to specialist subcontracts information.



3 00 Entrance Door Plan
Scale @ 1 : 50



4 Letter Plate Cladding Section
Scale @ 1 : 20

Scale Bars		TO BE USED ONLY AS GUIDANCE	
1:100	mm	1000	2000
1:200	mm	1000	2000
1:500	M	10	25
1:1250	M	10	25

NOTES

- All dimensions and levels are to be checked on site.
 - Any discrepancies are to be reported to the architect before any work commences.
 - This drawing shall not be scaled to ascertain any dimensions. Work to figured dimensions only.
 - This drawing shall not be reproduced without express written permission from AEW.
 - Title overlay drawings and ownership boundaries are produced using all reasonable endeavors. AEW cannot be responsible for the accuracy or scale discrepancy of base plans supplied to them.
 - All works are to be undertaken in accordance with Building Regulations and the latest British Standards.
 - All proprietary materials and products are to be used strictly in accordance with the manufacturers recommendations.
- This drawing contains the following model files: -
- 12737-AEW-03-XX-M3-A-0005

CDM 2015

Client notified of duties:
Principal Designer: **Winvic Construction**

Unless noted below, all known hazards have been highlighted on the drawing.

The curtain walling and glazing system shown to the office elevations will utilise recycled aluminium (minimum 35% by volume) and will be by Alutech Glazing, fully thermally broken system comprising polyester powder coated aluminium mullions and transoms complete with factory sealed double glazed units with glazed and insulated spandrel panels, where necessary.

Glazing will be in 6 mm Antisun (colour to be agreed) on clear glass outer pane or similar approved, 16 mm argon filled space and 6 mm 'low e' clear inner pane to achieve a U value of 1.5W/m2K. Spandrel panels, where necessary, will be in ultra warm Permawall or similar, insulated panels.

Opening windows on the basis of 1 in 3 glazed units (excluding the curtain walling) will be generally 'top hung' with lockable handles. Tilt and turn to be considered in locations where no other means of access for maintenance and cleaning. All windows to be in compliance with the CDM Regulations relating to access for cleaning and maintenance of windows and curtain walling all in accordance with British Standards recommendations.

Where applicable Brise Soleil will be integrated with the curtain walling and will be powder coated aluminium.

Windows should be installed with tidy joints between the interface with cladding sheeting rails, where the EDPM is exposed this should be covered by a flashing.

Note:
Red dashed line denotes structural opening of windows and curtain walling as advised by CA Group and Winvic.

FINAL CONSTRUCTION ISSUE

IN THE ABSENCE OF INFORMATION FROM THE PRINCIPAL CONTRACTOR TO THE CONTRARY, THE INFORMATION CONTAINED IN THIS DRAWING IS GIVEN IN GOOD FAITH AND IS UNDERSTOOD TO BE CORRECT BY AEW. ANY PERSON CARRYING OUT ANY WORKS BELOW GROUND MUST SATISFY THEMSELVES OF THE POSITION OF UNDERGROUND SERVICES AND DRAINAGE. AEW WILL NOT BE LIABLE FOR OCCURRENCES ARISING OUT OF FAILURE TO CHECK ON SITE.

C4	14/05/24	FINAL CONSTRUCTION ISSUE	TF	DOH
C3	20/11/23	Letter plate and chute updated as Employer comments at Progress Meeting No.2 20.11.23	TF	DOH
C2	15/11/23	Main entrance door updated to sliding door as confirmed by the Employer by email 14.11.23	TF	DOH
C1	08/11/23	ISSUED FOR CONSTRUCTION	TF	DOH
P03	06/10/23	Main entrance height amended to Compass comments	TF	DOH
P02	28/09/23	General Coordination Update Issue	TF	DOH
P01	12/09/23	Initial Issue	TF	DOH
Rev	Date	Description	Drawn by	Checked By
Status	Purpose of Issue FINAL CONSTRUCTION ISSUE			

drawing stage **Stage 5 Construction**

client
Panattoni

project

Plot 3, Great Bank Road, Bolton

drawing title

Window and Curtain Walling Schedule

date	10/18/22	drawn	TF
scale @ A1	As indicated	checked	DOH

Rev

C4

P23012-AEW-03-ZZ-SH-A-7002

Dwg No

www.aewarchitects.com

aew architects
0161 214 4370
www.aewarchitects.com